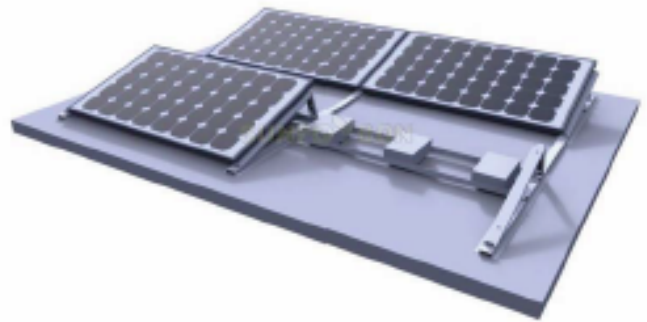




Single Phase Inverters

The X1 Boost series are high quality dual MPPT inverter offering efficiency and reliability at an unbeatable cost.

Solar Home System Sizes
3kw with 260w panels on grid solar connect
3kw with 260w panels and battery backup
5kw with 260w panels on grid solar connect
5.2kw with 260w panels and battery backup
10.4kw with 260w panels on grid solar connect
10.4kw with 260w panels and battery backup



Solar Panel

Module's power are classified according to the tolerance of 0 - +5W

The modules are soldered by automated machine.

All production is an automated assembly line. Ensuring high quality and reliability

- Also included:**
- Solar Cables
 - Solar Panel Mounting
 - Solar Connector
 - Switch Box
 - Battery & Battery Mounting

